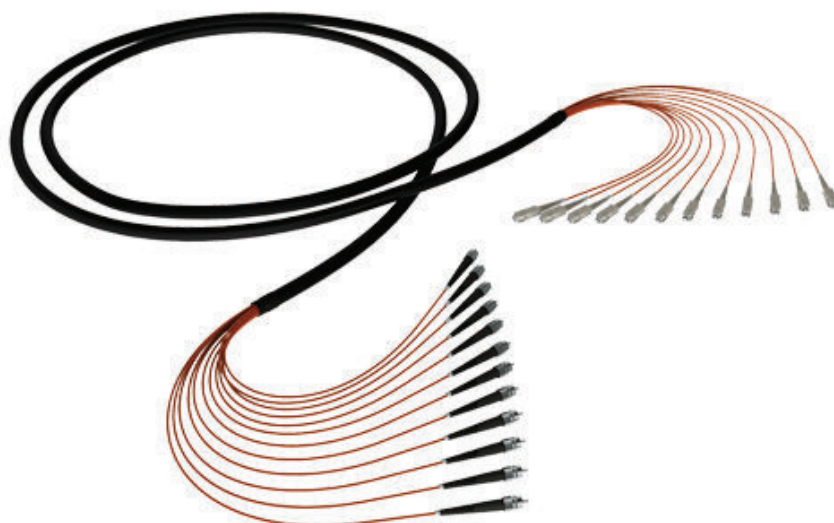


Breakout Cable Assemblies (2.0mm Tails)



Breakout cable assemblies are ideal for short cable runs where a direct connection to equipment or panels is required. The 2mm patch lead style cable subunits are ruggedised, to protect the optical fibre in the demanding environments outside the patch panel or ODF. The network topology can be reduced and simplified by direct connection; bypassing wall boxes, ODFs or fibre patch panels, The end result is greatly improved fibre management.

Feature

- Low insertion loss
- High return loss
- Mini distribution, breakout cable for selecting
- Small volume, high fiber density

Application

- LAN, CATV
- FTTH,FTTX
- Data transmission
- Telecom network
- Optical wiring system

Specification

Specifications		Parameters
Connectors Type		FC,ST,SC,LC
Core		2~48
Fiber Type	OS1,OS2	OM1,OM2,OM3,OM4
Return Loss(dB)	PC≥50,UPC≥55,APC≥65	
Repeatability(dB)	≤0.2	1000Times
Operating Temperature(°C)	-40~+85	



USA
Fernando Chang
Tel: 1-714-990-4488
E-mail: fchang@fipos.com



China
Glenn Wu
Mobile: 86-13509658246
E-mail: sale@fipos.cn