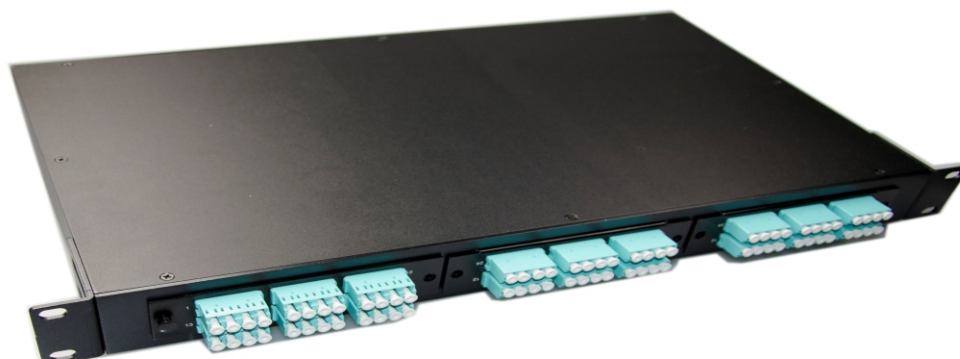


MPO/MTP Fixed Patch Panel -up to 72 fibers



This reliable and robust 1U fixed patch panel has been designed to accept LC duplex adaptors up to 72 fibres housed within a 1U space. With the ability to use a full array adaptor types offering a flexible solution to the end user, enabling them to incorporate a multi functional panel which offers a cost effective option for installations.

Feature

- Space saving design
- High performance and reliability
- Save installation time and labor
- Available in 72 fiber configurations
- Provide narrow solution for high density application

Application

- Data center infrastructure
- Storage area network
- Optical switch and router
- Emerging 40 and 100Gbps protocols compatible

Specification

Fiber Type	SM Ferrule	SM Low-loss Ferrule	MM Ferrule	MM Low-loss Ferrule
Insertion Typical (dB)	0.35	0.10	0.35	0.10
Insertion Maximum (dB)	0.70	0.35	0.60	0.35
Return Loss (dB)	PC≥50, UPC≥55, APC≥65			
Male/Female	Male: With Pins Female: Without Pins			
Repeatability (dB)	≤0.2 500Times			
Operating Temperature (°C)	-40~+85			



USA
Fernando Chang
Tel: 1-714-990-4488
E-mail: fchang@fipos.com



China
Glenn Wu
Mobile: 86-13509658246
E-mail: sale@fipos.cn